

Dell Latitude™ E4300 & E4200 Technical Guidebook



TABLE OF CONTENTS

E-Family Overview	3	Detailed Technical Overview	45-70
Key Features	3	System Configurations	46-50
All Day Computing	4-12	OS, Chipset, CPU	46
All Day Battery Life	5	Memory	47
Connectivity	6-7	Primary Storage	48
Dell ControlPoint	8-12	Removable Storage & Expansion Slots	49
Inspired Design	13-20	Ports and Connectors	50
Durable Design	14	Communications	51-58
DellFlash Ultra Performance SSD	15	Dell Wireless 1397 (802.11g)	51
Docks and Peripherals	16-20	Dell Wireless 1510 (802.11 a/g/Draft n)	52
Peace of Mind	21-26	Intel® WiFi Link 5100 (802.11 a/g/Draft n)	53
Dell Services	22-23	Intel® WiFi Link 5300 (802.11 a/g/Draft n)	54
Security	24-26	Dell Wireless 5530 (WWAN)	55
Total Control of Ownership	27-29	Dell Wireless 5720 (WWAN)	56
Systems Management	28-29	Dell Wireless 365 Bluetooth 2.1	57
Core Technologies	30-33	Network Adapter (NIC)	58
New Performance Architecture	31	Security	59
Graphics	32	E-Family Docking	60-62
The Green Side of Latitude	33	Graphic Controller	63
Product Gallery	34-44	LCD	64
E4300 Product Views	35-38	Battery	65-67
E4300 Technical Specifications	39	AC Adapters	68
E4200 Product Views	40-43	Keyboard & Mouse	69
E4200 Technical Specifications	44	Operating Conditions	70
		Important Information	71



Latitude E4300 and E4200 Ultra-Portable notebooks are engineered to be thin and light without compromising the enterprise-class features you come to expect with Dell Latitude laptops (Durable, Reliable, Long Battery Life, Highly Manageable, Maximize Total Cost of Ownership, Commonality and Ease of Use).

The Dell Latitude E4300 provides the **full feature set** of a Mainstream in a thin and light 13" laptop. The Dell Latitude E4200 starting weight is at 2.2 lbs (1kg) and is one of the **lightest enterprise-class 12.1"** notebooks.

Key Features:

- Innovative Dell Latitude On™ mode provides near instant access to email, calendar and internet through both Wi-Fi and mobile broadband connections. This low power mode enables long notebook battery life.
- The secure ultra-portable laptop featuring Dell ControlVault™ secure credential management, multi-factor authentication via an integrated contactless smart card reader (E4300), and optional biometric fingerprint reader.
- Anytime, Anywhere wireless connectivity* supports all current wireless technology like Wi-Fi®, mobile broadband*, Bluetooth® 2.1, and is built for emerging technologies such as WiMAX™, High Performance Wireless-N.
- Seamless transitions from on-the-move to full desktop experience with new Latitude family docking solutions.
- Dell ControlPoint™ creates an awesome user experience by simplifying your Wi-Fi connections. Make adjustments to management profiles without taxing your system memory.
- Sleek, thin and light with robust hinges for improved durability. Plus a new keyboard designed for accuracy, durability and comfort and also available with a backlit option.
- Featuring Intel® vPro™ technology for enhanced manageability and performance.
- Energy Star™ compliant and EPEAT Gold. E4200 takes Dell Latitude environmental leadership further with a motherboard containing "halogen-free" laminates, as well as "halogen-free" chassis plastics and fan housing/impeller.

Target Market

CIO, IT Managers, IT Generalists and Specialists, Small Business owners and End Users.

Primary Usage

Executive; Business Traveler; and Corridor Warrior



ALL DAY COMPUTING*



*I can stay connected and productive
virtually anywhere and everywhere.**



*See important information at end of document

All Day Battery Life*

Dell introduces a dramatic step forward in battery life: batteries that last and last for all-day computing*.

Both E4200 and E4300 are equipped with several battery options. Users can have dual battery configuration with an ultra-thin 6-cell battery slice and the primary 6-cell battery.

Introducing new technology like LED backlit displays and customized battery settings to achieve a full day charge through new Dell ControlPoint software

Extend your battery service with optional battery replacement service during your 3-year Limited Hardware Warranty*.



6-cell battery slice
can also be charged
stand-alone



X-cell battery with
LED battery
life/health gauge



Connectivity

Free yourself from cables with our excellent antenna design supporting Mobile Broadband*, Wireless-N in addition to emerging wireless technologies like WiMAX.

Optional Integrated Dell Mobile Broadband* (cellular data) mini-cards provide wide area data connectivity via national cellular networks. With average download speeds of up to 7.2 Mbps*, you can remain productive wherever you go.* Both EV-DO Rev A and HSPA solutions available; tri-band HSPA solutions support international roaming capability.

Dual 5-band mobile broadband antennas provide support for all major worldwide frequency bands. International travelers who roam between the U.S. and Europe can get full 3G speeds wherever they go. Furthermore, you get investment protection for after point of sale card purchases or even next generation card upgrades – the antennas to support are already there.

Mobile broadband cards have built-in GPS functionality that can be used with location-based applications.

Wi-Fi Catcher™

Wireless on/off switch and sniffer button allows user to easily find out if a connection is available, even when the system is off. Use the switch to turn off antennas when not in use to save battery life. Easy to check for available networks without opening or turning on the notebook.



Connectivity

Wi-Fi

Intel Centrino Mobile Technology

Latitude E4300/E4200 offer Intel® Centrino® Mobile technology featuring the Intel WiFi Link 5100 or 5300 Draft 802.11n Wi-Fi cards, Intel Core™ 2 Processor and Intel GS45 Express Chipset. Intel Centrino Mobile Technology delivers excellent wireless performance while enabling great notebook battery life.



Dell Wireless LAN

Latitude E4300/E4200 feature a choice of Dell Wireless Wi-Fi solutions with the option of either the Dell Wireless 1397 802.11g or the Dell Wireless 1510 Draft 802.11n Wi-Fi cards.



Personal Area Networks enable connection to devices and peripherals such as keyboards, mice, printers, scanners and wireless docking stations within a PAN.

Dell Wireless 365 Bluetooth

The optional Dell 365 Bluetooth module features the latest Bluetooth version 2.1 + EDR (Windows® XP OS) technology with a throughput of 3Mbps*.

Compared to the previous Dell 360/Bluetooth 2.0 combination, the new Dell Bluetooth 2.1 offerings can provide longer battery life and easier pairing for Bluetooth 2.1-capable devices.

Allows cable-free computing with Bluetooth enabled devices such as keyboards, mice, PDAs, headsets & mobile phones.



Dell's Wi-Fi and Bluetooth solutions are designed to work together with minimal interference. The optional Dell Wireless 365 Bluetooth module incorporates its own dedicated antenna and radio to help achieve optimal performance.



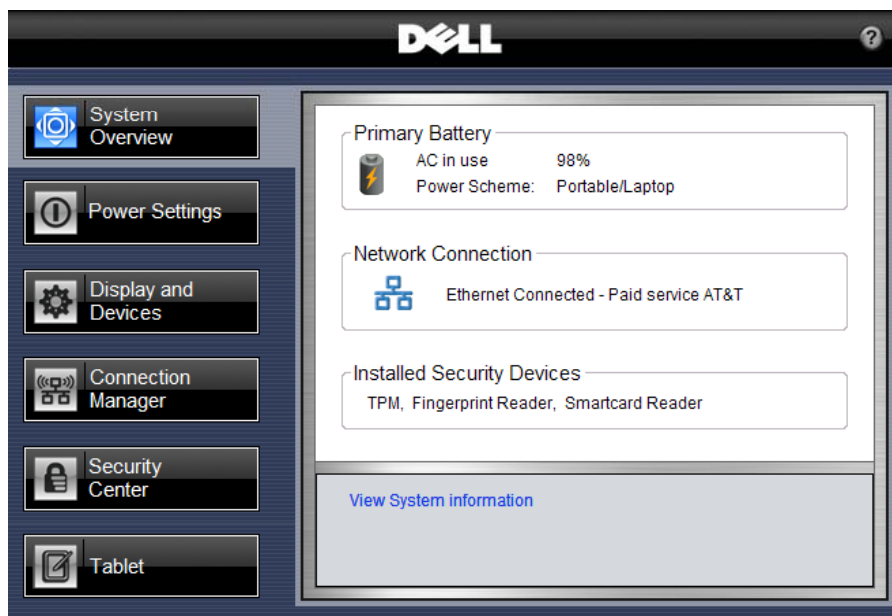
The Tools You Need

New Dell ControlPoint software puts you in complete control. It provides a single access point with intuitive navigation to easily configure your notebook the way you need it.

With a single hot key combination, you have access to the settings you need: power management, displays and devices, connections, security and system information. Consistent visual user interface throughout all these applications means easy, natural interaction for end users.

User Selectable Modules with Tight Administrative Controls

IT managers have the option to install all of the modules or pick and choose specific modules for their custom system images. IT managers can also control user configurable options, create company specific branding, and enable company help files and automated links to additional web content.



Dell ControlPoint

Power Settings

The ControlPoint Power Settings module provides a wide-ranging set of power management configuration, alerting capabilities and sleep modes.

Battery Status

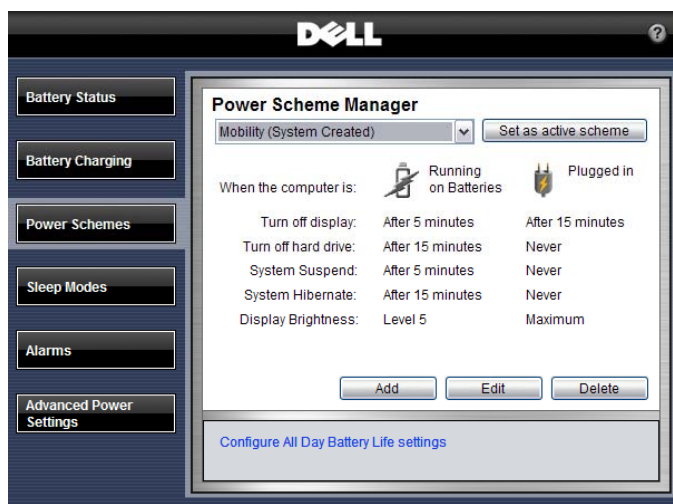
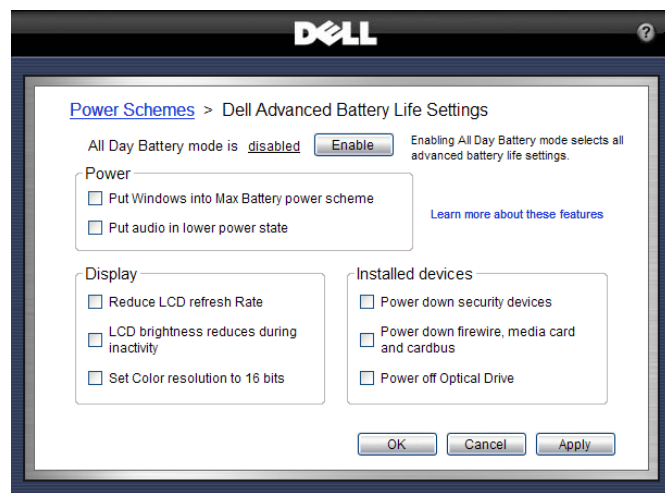
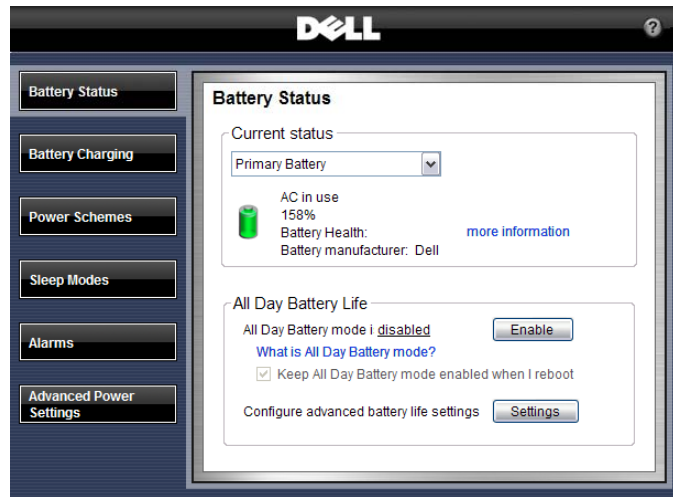
Quickly view battery status, available charge and health. Users can also easily configure advanced power settings to maximize battery life.

Power Scheme and Sleep Mode

Choose the preset All Day Battery Mode to maximize your battery life

Custom-configure power schemes to work the way you want to work

Sleep modes can be quickly configured along with standby and hibernate settings



Display and Devices

The Dell ControlPoint Display & Devices module provides a variety of configurable settings for your display as well as other devices attached or installed with your system. Some key configurable features include the presentation mode with projectors, ambient light sensor and keyboard backlighting capabilities.

Keyboard Hotkeys

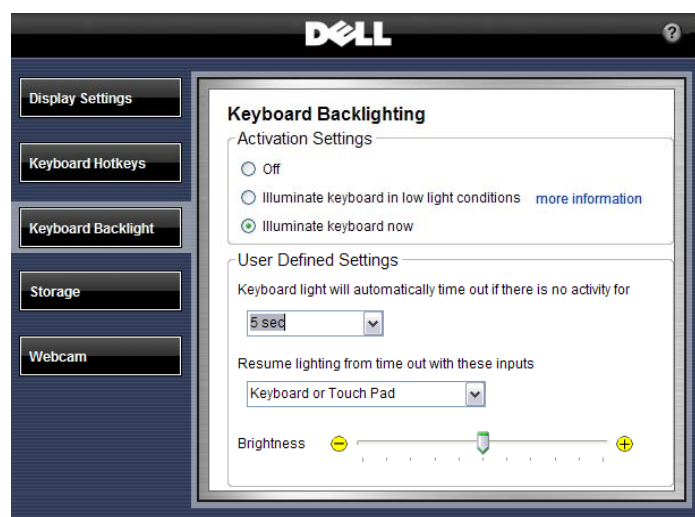
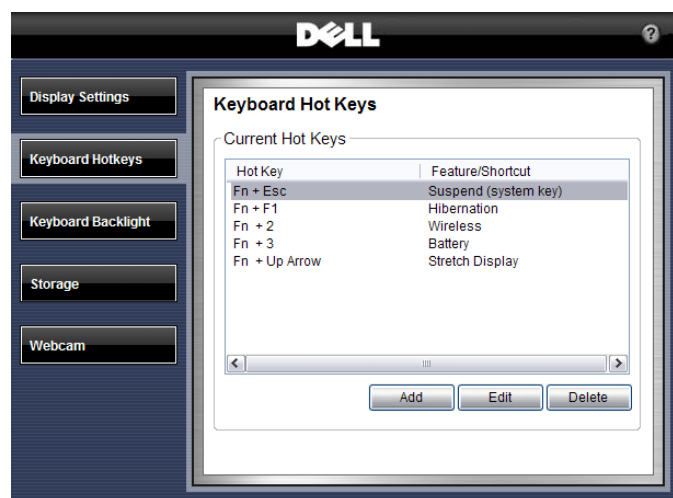
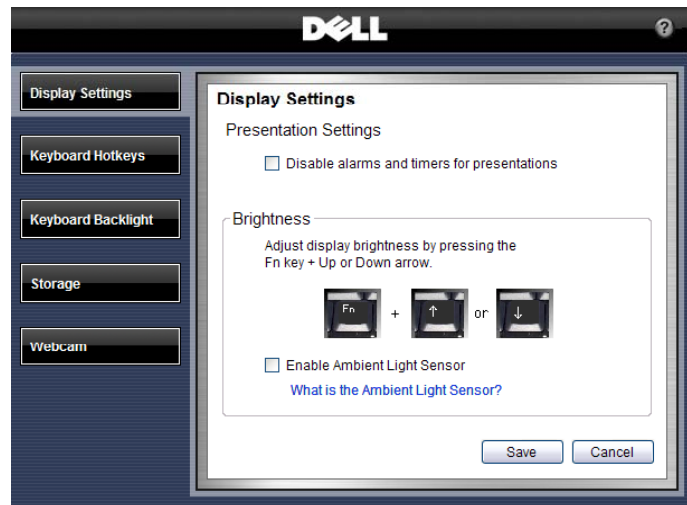
Customers can easily set up a series of custom hot keys to meet their individual work environment requirements



See your work in a whole new light.

Optional LED Backlit keyboards allow for easier work in darker settings.

Use ControlPoint to easily configure your backlit keyboard to automatically adjust to ambient light.



Dell ControlPoint Connections Manager

For fast and easy connections to any device or network, the Connections Manager module provides a comprehensive communications management environment: Ethernet, Dial-Up, Wi-Fi, Mobile Broadband* and GPS.

Users can also enable & disable any of the radios on their notebook – Wi-Fi, Bluetooth, UWB, GPS and Mobile Broadband*.

Location Profiles and Administrative Controls

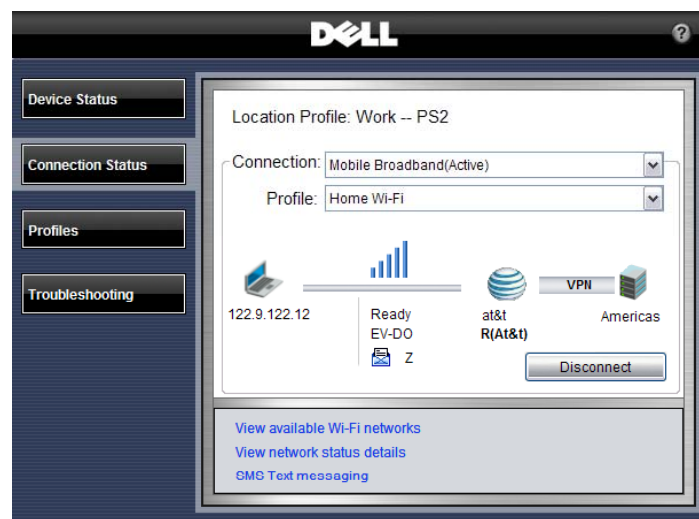
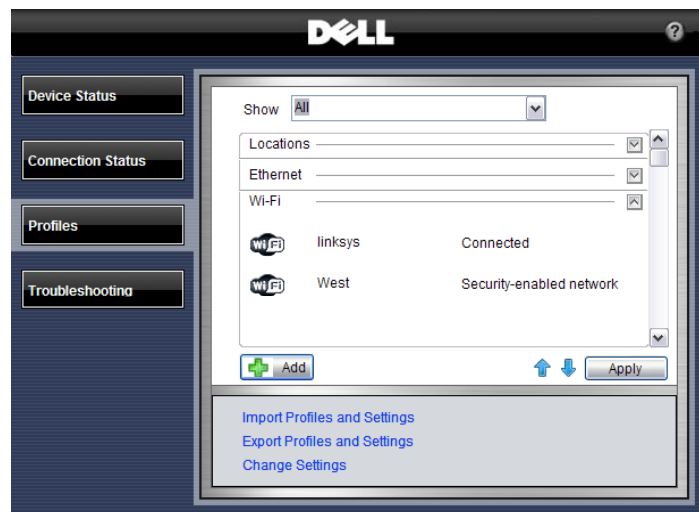
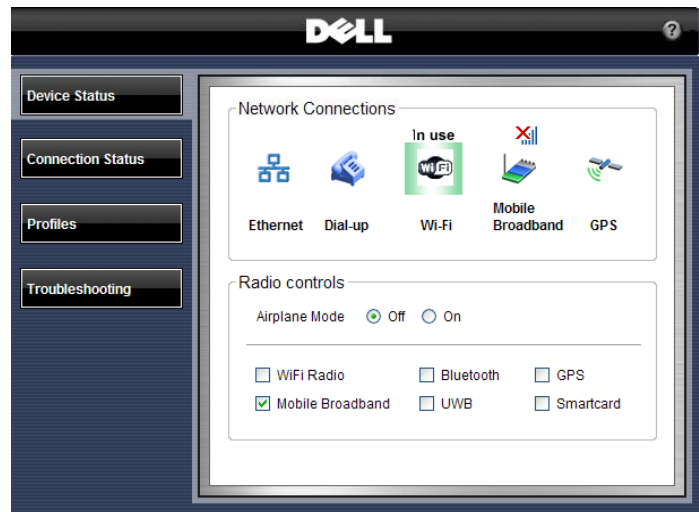
Create multiple mobile Profile Settings such as printer, browser, VPN and network, as well as mobility settings for adapter and profile switching.

Define, export, and import usage profiles. Customize printer setup, application launch, drive mapping, and more.

Administrative controls with the ability to limit user configurable options.

Enhanced Diagnostics and Administrative Tools

- Simple and advanced configuration and status dashboard
- Enhanced multi-network connection diagnostics and event logging
- Hardware diagnostics for all devices
- Error and Connection Status log
- Profile import/export and locking



Dell ControlPoint Security Center

As more critical data becomes mobile the need for enhanced security is vital. The Dell ControlPoint Security Center module provides access to use authentication, encryption, fingerprint readers and smartcard technologies.

Security Status

Quickly view system security status

Manage Logins and Passwords

Require fingerprint for login

Set a pre-boot password

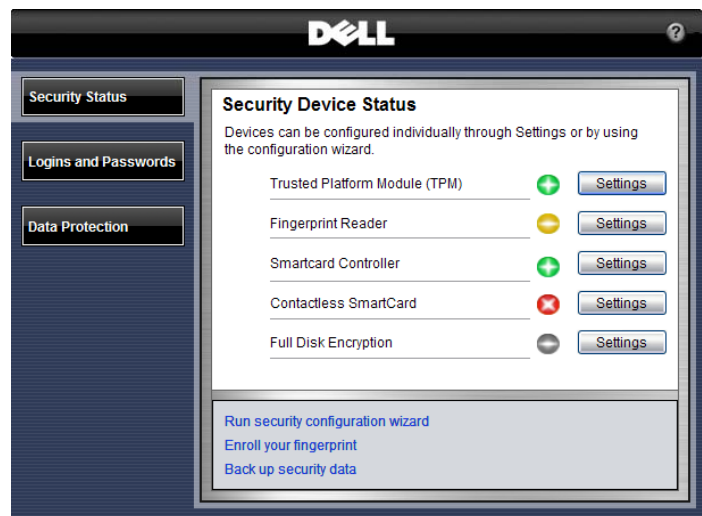
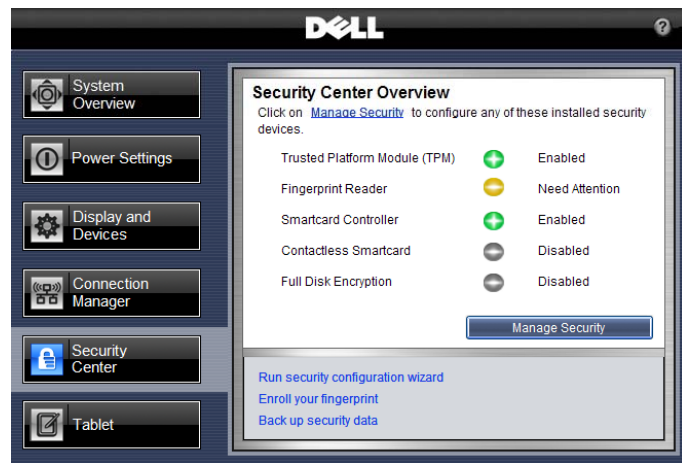
Manage Windows® password settings

Manage Data Protection

Set hard drive password

Manage document vault

Manage encryption



INSPIRED DESIGN.



My notebook should work as hard as I do.



Stunning, Durable Design

No detail went overlooked. Latitude E4300 and E4200 delivers sleeker and smarter notebooks that stand up to tough conditions.

Premium materials and finishes create a notebook you can be proud to carry.

New paint process helps provide long-lasting premium paint finish.

Exceptional durability with redesigned robust hinges & latches.

Strike Zone™ helps improve hard drive protection in the event of a fall by dissipating shock. (E4300)

Our 7200rpm hard drives now come standard with Free Fall Sensors. (E4300)

Keyboard durability focus means E-Family is designed for improved keycap retention and screen printing.

Notebooks designed to run cooler. Our new inverted motherboard helps improve thermal design and accessibility for easier service.



E4300 with new hinge design and paint finish

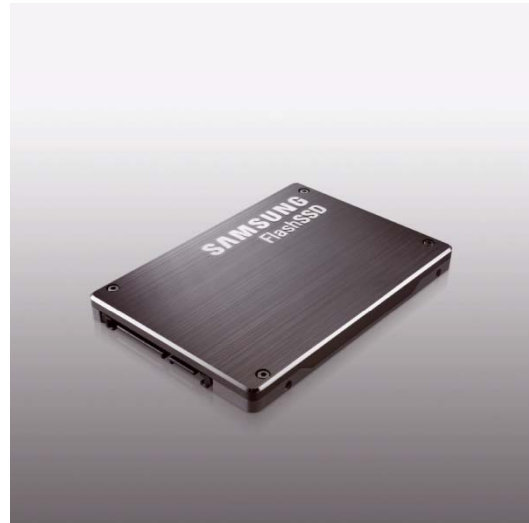


Dell Flash Ultra Performance Solid State Drive

Durability, reliability and exceptional performance. With overall system performance that exceeds a 10K RPM desktop HDD¹,

Dell Flash Ultra Performance SSD takes notebook productivity to a new level.

- Overall system performance gain is triple what you get when moving from a 5400 RPM to a 7200 RPM notebook HDD.
 - 10% system performance improvement from 5400 RPM to 7200 RPM notebook HDD¹
 - 35% system performance improvement from a 5400 RPM notebook HDD to Ultra Performance SSD¹
- 22% improved system performance over a 7200 RPM performance notebook HDD¹



With no moving parts, SSD is designed to provide a quantum leap forward in durability and reliability.

- Predicted reliability more than 3x better than a standard hard drive²
- Shock tolerance is 8.5 times better than standard notebook hard drive in operating mode³

¹ Based on SysMark 2007 Benchmark tests performed by Dell Labs in January 2008. Actual performance will vary based on configuration, usage and manufacturing variability.

² Based on Mean Time Between Failure (MTBF) of 2M for Ultra Performance SSD vs. 550K for standard Dell 2.5" HDD, per Dell HDD spec.

³ Based on Operating Shock tolerance of 1500G for 0.5ms for Ultra Performance SSD vs. 175G for 0.5ms for standard Dell 2.5" HDD, per Dell HDD spec.



Expanding Mobile Experience

Redesigned sleeker, smaller docks and peripherals deliver a seamless experience between your desktop and mobility – including the new E-Port and notebook stand – designed for the smallest footprint.

E-Port Plus offers Dual Digital Monitor capabilities along with legacy ports - The non-compromise station designed for enhanced usability at desk supports hot & warm docking.



E-Port Plus side and back views



E-Port is a space-saving port replicator for graphics as well as latest ports. Suitable for home and office environment enables you to conveniently connect to your desk peripherals.



E-Port side and back views



E-Legacy Extender is a lightweight (0.45lb, 0.2kg) adapter that can be attached to the bottom of the notebooks adding parallel, serial, PS/2 and 2 USB connectors.



E-Legacy Extender back view



E-Flat Panel Stand

The Integrated Flat Panel Stand is an ergonomic stand associated for the new Latitude E-Port and E-Port Plus. It accepts Dell Flat Panels via the Dell Quick Connect connector (default) as well as standard VESA mount (requires screws).



E-Flat Panel Stand with dual flat panel monitor desktop configuration



E-Flat Panel Stand front and side views with E-Port Plus



E-View Laptop Stand

This stand provides an innovative way to use the notebook LCD versus an external monitor at the end users desk. E-Family notebook stand is adjustable and enables the user to elevate the LCD panel to an ergonomic position. It also requires significantly less desk space than a dock and external monitor.



E-View with dual monitor desktop configuration



E-View side view

E-Monitor Stand

The Basic Monitor Stand is an accessory of the E-Port and E-Port Plus that enable use of any LCD flat panel monitors and CRT monitors.



E-Monitor Stand back view



More Innovative Mobile Solutions

The Latitude E4300 and E4200 LCD bezels have been designed specifically to hold new custom-designed 3M privacy filters seamlessly. No more sticky, messy tabs.

E-Media Bay offers the flexibility of a second hard drive or connect an optical drive via the eSATA port on your E4300 or E4200.

Leave your cell phone charger at home. **USB PowerShare** is a new Dell feature that allows you to charge or power peripherals from the USB port of the notebook.

New Dell M109S DLP® Projector has a tiny form factor and uses the same power cord used by other Latitude E Family systems - no extra power cord to carry.



E4200 with custom-designed 3M privacy filter



E-Media Bay



USB PowerShare denoted with a lighting bolt icon



Dell M109S DLP® Projector



Cases

New Latitude cases are designed to optimize mobility with a sleek new look, soft grip handles, seatbelt grade straps, EVA compression molded foam protection, custom hardware and useful inside pockets.

New Sleeves are designed with top grade neoprene.



Laptop Sleeves



Executive Leather



Deluxe Nylon



Slim Nylon



PEACE OF MIND IS PART OF THE PACKAGE.



My data should be mine and mine alone.



Dell ProSupport Mobility Services*

The broadest solution for protecting your notebooks and data. Committed to enabling your mobile workforce, minimizing downtime and protecting your investment.

Mobile Asset Protection Services* enable your mobile workforce while protecting your investment with Extended Battery Service during your 3-year Limited Hardware Warranty*, CompleteCare Accidental Damage Service* and Laptop Tracking and Recovery*.

Mobile Data Protection Services*

featuring Remote Data Delete, Hard Drive Data Recovery and Certified Data Deletion services. Helps you feel more secure knowing Dell can track it and remotely delete your sensitive data to help prevent potential loss of valuable data or recover data when you have a failed hard drive and did not back up your system.

Solve asset issues while keeping end users productive on the road.

CompleteCare Accidental Damage Service* coverage for notebooks that have encountered liquid spills, electrical surges, drops, falls, extreme temperatures and collision.

Theft and Recovery Protection assists in finding a lost or stolen laptop, via tracking software loaded on the system.

Remote Data Deletion allows remote initiation of a disk drive data wipe in the event the system is lost or stolen.

Extended Battery Service aligns battery coverage with your laptop usage, and provides one additional replacement battery during years 2 or 3 of coverage.



Availability and terms of Dell Services vary by region. For more information, visit www.dell.com/servicedescriptions.



*See important information at end of document

Deployment Services - Helps customers more effectively execute Windows Vista® migrations and E-Family deployments

Dell ImageDirect Service is cross-platform to help ensure a streamlined transition to the new Latitude E-Family from legacy Dell products. With ImageDirect, your image is only a few mouse clicks from being ready to deploy as opposed to the few weeks inherent with traditional image make-ready.

Dell Client Migration and Deployment Services deliver the upfront planning and automated implementation that can reduce cost, helps minimize disruption to ongoing productivity by reducing 88%¹ of the desk-side technician time and by eliminating an estimated 70%¹ of the network traffic associated with deployment.

Dell Automated Deployment (DAD) patent pending tools and processes that minimize technician intervention thereby allowing the technician to spend just minutes at a PC instead of hours.

- **Dell Data Direct™ (DDD)** captures and migrates complete end-user accounts, including OS and application settings, printers, data files, and more.

Dell Desktop Management Services enable IT organizations to manage mobile, distributed workforces via the web anytime from virtually anywhere in the world. This powerful, scalable and cost effective Software-as-a-Service (SaaS) platform model is activated with a simple Internet connection. Our comprehensive set of software services are delivered via a single, integrated Web-based management console.

- **Asset Management** – automated tracking of software, hardware, and software licenses for all desktops and laptops, regardless of location.
- **Patch Management** – Helps protect corporate and remote users through a fully automated or targeted patch management approach.
- **Anti-Malware & Virus Management** – Provides management of advanced antivirus, antispware, anti-malware and firewall solutions from world class vendors including Symantec™, McAfee® and Microsoft®.
- **Data Encryption** – Encrypts and protects data on an online or offline PC to help prevent its compromise or misuse allowing organizational control of that data even when the user has lost control of the device.
- **Online Backup** – Designed to deliver safe, secure, and automated backup over the Internet powered by Iron Mountain® software and storage at fully redundant offsite facilities.
- **Software Distribution** – Drives adherence of corporate standards by automating the distribution of new applications and upgrades as well as helping to maintain uniform configurations throughout the organization including support for Faronics' Deep Freeze.

¹Based on an internal assessment of select Dell customers compiled from October 2006 to October 2007.



Simply Secure

Information technology has become a backbone for our customers. It is a daily tool for real time collaboration as well as crucial business data storage. At the same time, our world has become extremely mobile: valuable files are sent over the networks or carried around the planet on notebooks. As a result, there is a growing threat for data loss or leakage.

Whether you need enhanced physical protection or easy to manage protection for your critical data, Dell's security offering can help. We are committed to simplifying security deployment, usage and maintenance, in order to allow smaller businesses to acquire relevant security and larger organizations to implement at low total cost of ownership impact.

Deploy Faster

The complexity of IT can slow down even the most tightly run organization. By speeding up deployment and configuration, you can reclaim wasted time and redirect it toward growing your business.

Dell can deliver a fully secured system directly from the factory that covers all four key aspects of security: System Protection, Access Control, Data protection and Malicious Threats prevention.

With Dell's Custom Factory Integration (CFI), we can deliver pre-configured systems including non-Dell standard hardware and proprietary software right out of the factory.

CFI offers security features such as custom asset tags, and StopTrack or TLS labels.



Protect Better

Dell wants to give you total control by building simplicity into everything we do. Our products and services are fully manageable, making it easy for you to proactively maintain and support.

The Latitude E-Family systems offer several options to protect your data and hardware better. Hardware Encrypted Data protection is available, can be activated within a few seconds centrally and can be much safer than software based encryption.

The Latitude E4300 and E4200 include a new feature called Dell ControlVault, which is an innovative security chip.

Dell ControlVault key features are:

- Single location for end users credentials such as passwords and biometric templates.
- Credentials are securely located in firmware, outside of the attack vector of malicious applications.
- Provides capability to perform security processing/matching in firmware outside the scope of malicious applications.



Prevent Smarter

You want to prevent security breaches into your business. But security is complex and there are many aspects to it. Choices are difficult to make, stable technologies cannot be identified, and you could suffer from skyrocketing costs and complexity.

Based on long-lasting technologies, Dell end-point security solutions enable you to protect business assets by including relevant and long term technologies in our notebooks.

The Latitude E4300 and E4200 are designed with these multi-factor authentication technologies:

- Standard smartcard reader
- New integrated contactless card reader supports leading edge technology from HID and is designed to enable the convergence of physical and logical access.(E4300)
- Integrated fingerprint reader option

Furthermore, we make security easy for the user as well by providing easy to use software that supports multiple technologies through a single console in Dell ControlPoint Security Manager (see page 13 of this guide for more.)



Integrated fingerprint reader option on both E4300 and E4200



PUTS IN THE HOURS.
WORKS WELL WITH OTHERS.
ALWAYS COMES IN UNDER BUDGET.



*I should be able to manage my notebooks
anywhere in the world without leaving my desk.*



Latitude works like it's supposed to, with freedom from hassles and constant overhauls. It's the ultimate team player, letting you manage notebooks virtually anywhere in the world without leaving your desk. Finally, an IT investment that doesn't cost a fortune coupled with business-class service that is truly first class. Freedom from hassles with technology that gives you Total Control of Ownership.

Unplanned change costs your business time, money and people. Dell minimizes change to help you reclaim and refocus your resources.

Long product lifecycles and proactively managed product transitions help minimize costs and headaches. Long lifecycle and long overlap means customers have time to evaluate the new product, create a new image and plan the transition as fits their business needs.

Consistent configurations worldwide simplify global deployment and management.

Image stability is key. Carefully managed change means fewer image impacts. When change is unavoidable, Dell gives you the tools for early notification months before they happen.

Dell ImageWatch™ is a flexible and easy to use tool that enables proactive transition management for Dell customers.

Compatible peripherals, adapters, and docking

Share accessories among users and among systems within the family.



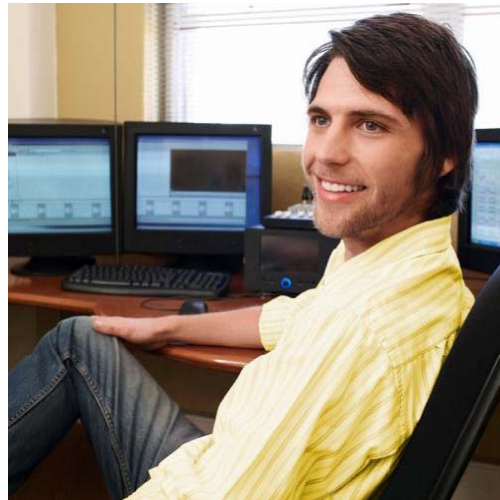
Latitude Dual Display set-up with E-Port Plus and E-Flat Panel Stand



The Dell Client Manager console used in conjunction with Intel® Centrino 2 with vPro™ technology can reduce the need for desktide visits for both troubleshooting, and system maintenance and migration.

Dell Client Manager can enable DASH, which is the new industry standard for secure out-of-band and remote management of desktop and mobile systems

Benefit from the Dell Client Manager's predictive hardware monitoring, streamline after-hour updates and help improve data security .



Built-in Management and Advanced Security

The Latitude E4300 and E4200 notebooks can be configured with Intel® Centrino 2 with vPro™ technology. With Intel AMT 4.0, customers can scale Intel® AMT deployments with remote configuration and benefit from support for next generation management standards: WS-MAN and DASH 1.0.

Remote configuration

More convenient option for over-the-wire set-up

Allows transfer of Intel® AMT keys over the network during set-up

New out of band management capabilities

Client Initiated Remote Access (CIRA) allows client initiated, secure Out of Band (OOB) communication to the management console²

Wireless manageability during sleep states

Wireless management of notebooks even when asleep, hibernating or powered off¹

Supports next-generation mgmt standards (WS-MAN & DASH 1.0)

More capable, extensible, and secure than ASF
Standardizes management interface between console and PC

¹ Requires AC Power

² Requires user to 'accept' any terms of service gateway and that the gateway remain open over a period of time.



CORE TECHNOLOGIES



New Performance Architecture Intel® Core™ 2 Duo Processor

Dell Latitude E4300 and E4200 are equipped with Intel® Core™ 2 Duo mobile technology, featuring the Intel GS45 Express chipset.

For E4300, you get powerful mobile dual-core processors up to 2.4GHz with 6MB Level 2 cache and up to 8GB* of 1066MHz dual-channel DDR3 system memory*.

For E4200, you get power efficient mobile dual-core processors up to 1.4GHz with 3MB Level 2 cache and up to 5GB* of 1066MHz (running at 800MHz) dual-channel DDR3 system memory*.

Intel® Centrino® 2 processor technology provides a forward leap in wireless connectivity, battery life and performance. Intel® Centrino® 2 processor technology helps meet Energy Star requirements without sacrificing performance.

Chipset and Memory

Intel® GS45 Express Chipset features:

- Support for up to 8GB* system memory and for dual memory channels and DDR3 1066MHz memory*
- Intel Active Management Technology 4.0
- Serial ATA hard drive support
- Up to 6 PCI express ports
- Small footprint (size)

Dual Channel DDR3 Memory*

DDR3 offers dual-channel capability for additional bandwidth and performance, reduced power consumption and scalability to help increase performance with processor and chipset bus architecture.



Latitude E4300, designed to be fast and powerful in a compact size

PCI-Express (PCI-E) Technology

Serial I/O and Graphics Interconnect provide high performance (up to 8GB/sec bandwidth) backwards compatibility with PCI implementation. PCI-Express is expected to keep pace with processor and I/O advances for the next 10 years or more, so it is designed to address your technology for the foreseeable future.



Graphics

The Latitude E4300 and E4200 are equipped with Intel integrated graphics*.

Mobile Intel® Graphics Media Accelerator 4500MHD brings the next generation benefits of dialed up performance, power management and support for new technologies.

Intel GMA 4500MHD helps deliver a next generation video and 3D experience:

- Clear and accurate video playback with crisp details.
- Support for advanced features like Picture-in-Picture,
- Use new video display connectors HDMI and DisplayPort
- Full hardware decode enables smooth playback of next generation HD AVC, VCI, MPEG2 content.
- View weave and jitter-free playback of static and fast-moving objects with SD and HD de-interlacing which applies multiple fields to construct progressive frames.
- Experience rich 3D graphics applications with Microsoft® DirectX® 10 and DXVA 2.0 – new industry graphics feature and acceleration technologies
- More accurately scale images to fit different display resolutions with Panel Fitter 2
- Efficient and intelligent balancing of shared system memory usage between graphics and other applications with DVMT 5.0

Users can experience the latest power conservation features of Intel GMA 4500MHD. Intel® Graphics Power Modulation Technology helps extend battery life through dynamic switching of render core voltage and frequency. Graphics Render Standby puts render engine into standby during periods of inactivity and dynamically lowers render core voltage.



Latitude E4200 with integrated GMA 4500MHD



The Green Side of Latitude

Dell's environmental stewardship program drives to conserve product energy consumption, reduce or eliminate materials for disposal, prolong product life span and provide effective and convenient equipment recovery solutions. By streamlining business steps and processes, Dell minimizes stress on the environment while achieving speed, responsiveness and cost savings that can be passed along to customers.

Product Concept and Design – with Environment in Mind

Dell's focus on improving environmental performance starts with our Design for the Environment (DfE) approach. When designing new systems, engineers consider environmental factors such as material composition of components, amount of materials used, energy efficiency as well as design attributes that aid in recycling.

The Latitude brand has a history of leadership in delivering green notebooks:

- 1st Notebook to achieve EPEAT Gold (Latitude D630)
- 1st Notebook to implement Energy Star 4.0 Standard (Latitude portfolio May 2007)

Minimize Energy Consumption

- 1st Energy Star 4.0 Compliant Notebooks
- Industry Leading Energy Smart Power Management Settings on all Latitude Notebooks
- Energy Efficient Technologies (CPU, LED Backlight etc.)
- 87% Averaged Efficiency for E-Family External Adapters

Environmentally-Preferable Materials

- WW RoHS (Lead-Free) Compliant since July 2006
- China RoHS Compliant
- Mercury Free LCD Panels (Latitude XT, E6400, E6500, E4300, E4200)
- Dell Latitude E4200 will be the first Halogen-Reduced Dell notebook that offers a motherboard containing “halogen-free” laminates (per JPCA ES-01-1999), as well as “halogen-free” chassis plastics and fan housing/impeller.

Minimize Waste

- Recycled Packaging with 25% Post Consumer Cardboard
- Asset Recovery and Recycling Services



Product Gallery



E4300 Weight, Dimensions and Top View Detail

Weight starting at: 3.3lbs/1.50kg*

Dimensions:

Width: 12.2"/310mm

Depth: 8.6"/217.4mm

Height: 1.0-1.1"/25.4-29.0mm*



Integrated VGA webcam for web conferencing

Bright 13.3" WLED display (250 nits)

Innovative Latitude™ ON technology, providing 2 second instant access and exceptional long battery life.

Quick touch volume up, down and mute buttons

Hot Key to launch Dell ControlPoint console <Fn+F7>

Contactless Smart Card Reader option

Precision-tuned keyboard with backlit option

Ambient light sensor can be customized in Dell ControlPoint to adjust display and backlit keyboard brightness



Optional fingerprint reader is located at the bottom of the right corner



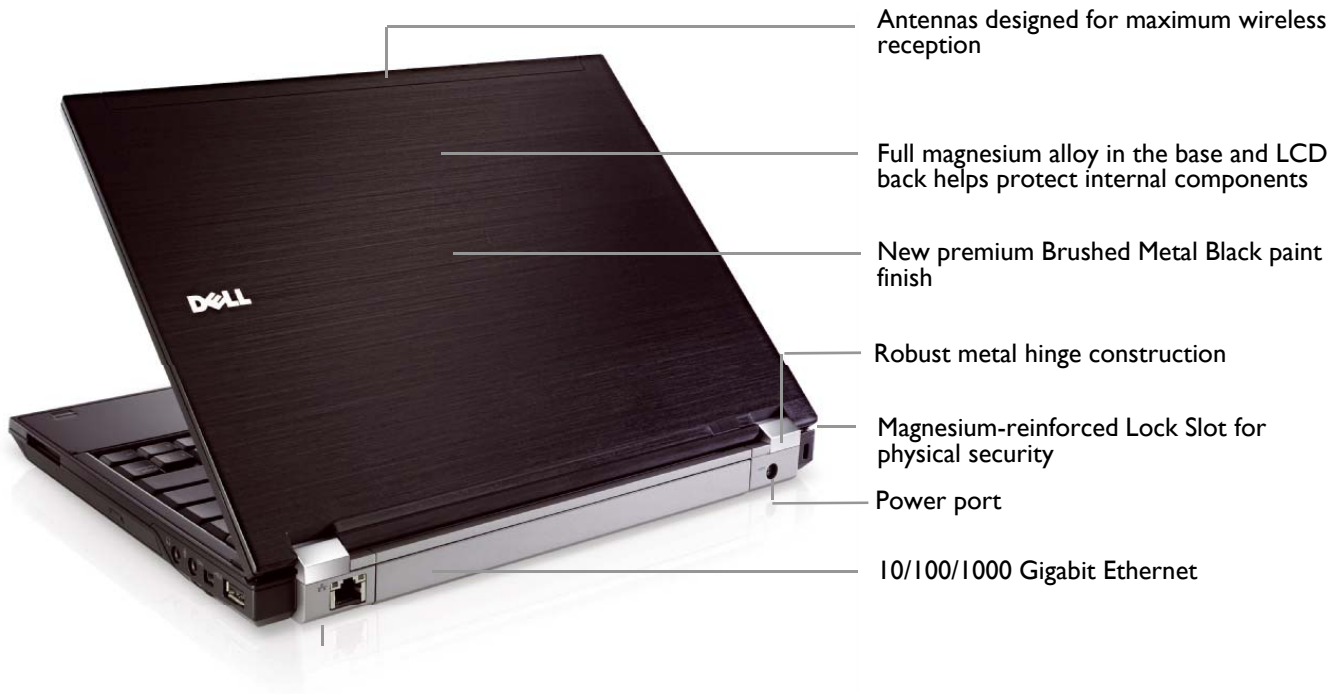
Dual pointing with Large track pad and redesigned track point



Robust redesigned metal latch



E4300 Front and Back View Detail



E4300 Left View



Integrated Smart Card Reader

eSATA/USB combo

VGA



E4300 Right View



Processors

Intel® Core™ 2 Duo Processor
Up to SP9400 (2.4GHz, 6MB L2 Cache)

Operating System

Genuine Windows Vista® Ultimate
Genuine Windows Vista® Business
Genuine Windows Vista® Business 64-Bit
Genuine Windows Vista® Home Basic
Genuine Windows Vista® Ultimate or Business
Downgrade, Genuine Windows XP Professional
Installed

Chipset

Mobile Intel® GS45 Express Chipset

Displays

13.3" Widescreen WXGA (1280x800) LED Backlit

Memory

Dual Channel DDR3 Memory*
Two Memory slots offering up to 8GB*
Memory Bandwidth: 1066MHz

Primary Storage

UltraPerformance Solid State Drive up to 64GB
7200RPM Free Fall Sensor Hard Drive up to 160GB*
5400RPM Encrypted Hard Drive up to 120GB*
5400RPM up to 250GB*

Media Bay

Fixed media bay: 8X DVD-ROM, 8X DVD+/-RW*, or
TravelLite Module (Airbay)

Graphics Cards

Mobile Intel® Graphics Media Accelerator 4500MHD*

Hardware-Enabled Systems Management

Intel vPro™ Technology's advanced management
features (optional, requires Intel WiFi® Link WLAN)

Power

65 Watt AC adapter with cord wrapping
65 Watt Auto/Air/AC Travel Adapter
3-cell or 6-cell
6-cell high capacity battery slice (optional)

Chassis

Preliminary weight starting at: 3.3lbs/1.50kg*
Dimensions:
Width: 12.2"/310mm
Depth: 8.6"/217.4mm
Height: 1.0-1.1"/25.4-29.0mm*

Connectivity

Dell ControlPoint Connection Manager

Wired:

10/100/1000 Gigabit Ethernet

Wireless:

Wireless LAN: Dell Wireless 1397 (802.11g), Dell Wireless
1510 (802.11 a/g/n 2x2), Intel® WiFi Link 5100 [802.11 a/g/n
(1x2)], Intel WiFi Link 5300 [802.11 a/g/n (3x3)]

Mobile Broadband* & GPS: Dell Wireless 5720 (EvDO &
GPS) Mobile Broadband mini card, Dell Wireless 5530 (Tri-
band HSDPA 7.2/HSUPA 2.0 & GPS) Mini-Card

Bluetooth: Dell Wireless 365 Bluetooth® 2.1

Security

Physical Security:

Mag-Alloy-reinforced Cable Lock Slots and Hard Drive
Locks.

User & System Security:

Smart Card Reader, Contactless Smart Card Reader
(optional), Fingerprint Reader (optional), TPM 1.2*
Optional Encrypted Hard Drive provides full disk encryption
Dell ControlPoint Security Manager
Dell ControlVault™

Network Security:

802.11 Wi-Fi Protected Access (WPA), 802.11i (WPA2),
Virtual Private Networks (VPN) 802.1x with EAP modes and
compatible with CCX 4.0

Collaboration

2 speakers, digital microphone
Integrated VGA webcam (optional)

Expandability

Slots:

SD/MMC media card reader & Expresscard/34

Docking:

E-Port, E-Port Plus, E-Legacy Extender, E-Flat Panel Stand, E-
Monitor Stand, E-View Laptop Stand, E-Media Bay

Ports

1394, docking connector, USB 2.0 (x1) with USB
PowerShare, eSATA/USB Combo (x1), VGA, RJ-45, Power,
headphone/speaker out, mic

Input

Dual-pointing, Backlit keyboard option



E4200 Weight, Dimensions and Top View Detail

Weight starting at: 2.2lbs/1.0kg*

Dimensions

Width: 11.4"/290mm

Depth: 8.0"/204mm

Height: 0.8"-1.06"/20-26.8mm*



Bright 12.1" WLED display (250 nits)

Ambient light sensor can be customized in Dell ControlPoint to adjust display and backlit keyboard brightness

Quick touch volume up, down and mute buttons

Hot Key to launch Dell ControlPoint console <Fn+F7>

Precision-tuned keyboard with backlit option

Innovative Latitude™ ON technology, providing 2 second instant access and exceptional long battery life.

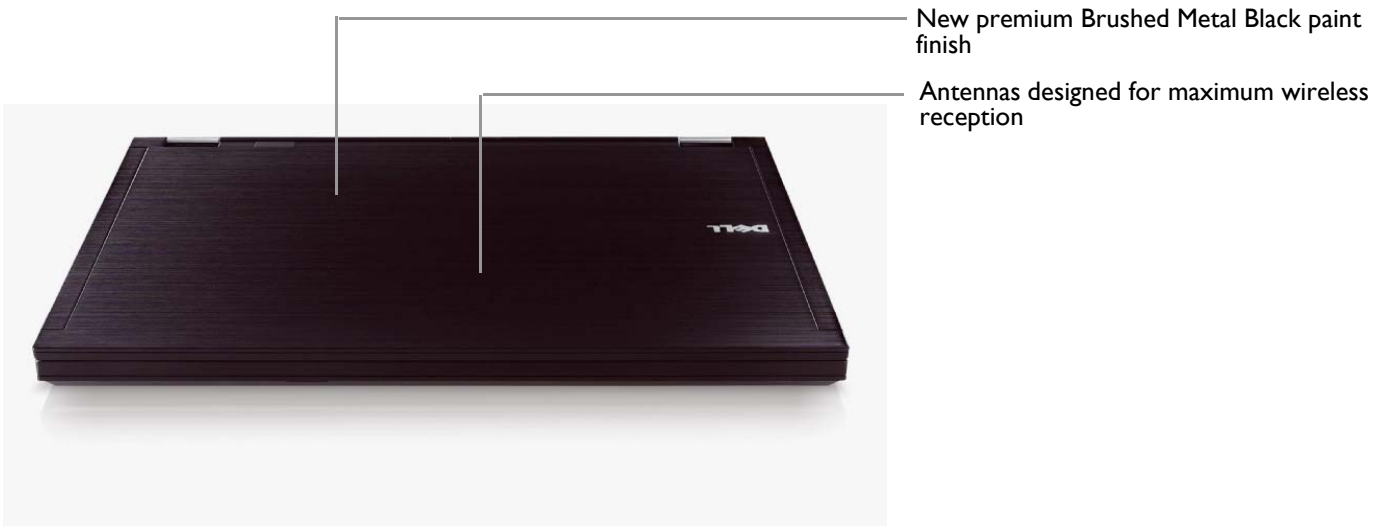
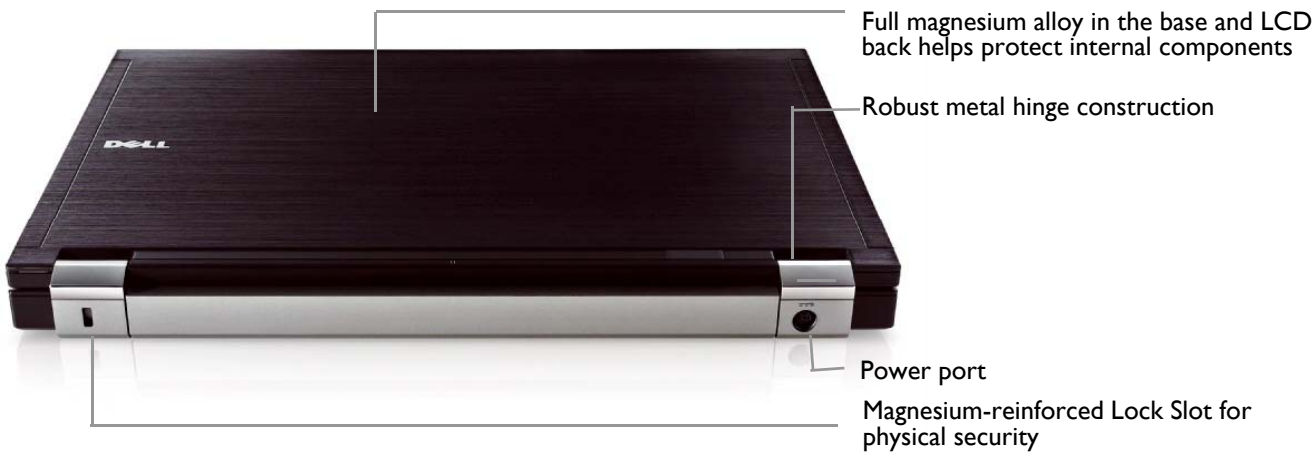


Optional fingerprint reader is located at the bottom, right corner



Close up of touch pad





E4200 Left View



- Smart Card Reader
- Express Card/34
- Headphone, Microphone
- eSATA/USB combo
- VGA



Close up of:
VGA, eSATA/USB combo,
Headphone and Microphone
Ports



E4200 Right View



- RJ45 - 10/100/1000 Gigabit Ethernet
- USB PowerShare, charging other electronics while system is turned off.
- 1394 port
- SD Media Card Reader
- Wireless On/Off and Wireless Sniffer



Close up of
1394 port, PowerShare/USB combo
Port and RJ45



Close up of:
Wireless On/Off Switch and
Wireless "Sniffer"



Processors

Intel® Core™ 2 Duo Processor
Up to SU9400 (1.4GHz, 3MB L2 Cache)

Operating System

Genuine Windows Vista® Ultimate
Genuine Windows Vista® Business
Genuine Windows Vista® Business 64-Bit
Genuine Windows Vista® Home Basic
Genuine Windows Vista® Ultimate or Business
Downgrade, Genuine Windows XP Professional
Installed

Chipset

Mobile Intel® GS45 Express Chipset

Displays

12.1" Widescreen WXGA (1280x800) Backlit
LED Display

Memory

Dual Channel DDR3 Memory*
1GB on board and one Memory slot offering up to a
combined 5GB*
Memory Bandwidth: 1066MHz (running at 800MHz)

Primary Storage

UltraPerformance Solid State Drive up to 64GB
Mobility Solid State Drive up to 128GB

Media Bay

No built-in optical; optional MediaBase with DVD/RW
or E-Media Bay through eSATA connection

Graphics Cards

Mobile Intel® Graphics Media Accelerator 4500MHD*

Hardware-Enabled Systems Management

Intel vPro™ Technology's advanced management
features (optional, requires Intel WiFi® Link WLAN)

Power

45 Watt AC adapter with cord wrapping
65 Watt Auto/Air/AC Travel Adapter
4-cell prismatic primary battery or 6-cell extended
primary battery; 6-cell high capacity battery slice
(optional)

Chassis

Preliminary weight starting at: 2.2lbs/1.0kg*
Dimensions
Width: 11.4"/290mm
Depth: 8.0"/204mm
Height: 0.8"-1.06"/20-26.8mm*

Connectivity

Dell ControlPoint Connection Manager

Wired

10/100/1000 Gigabit Ethernet

Wireless

Wireless LAN: Dell Wireless 1397 (802.11g), Dell Wireless
1510 (802.11 a/g/n 2x2), Intel® WiFi Link 5100 [802.11a/g/n
(1x2)], Intel WiFi Link 5300 [802.11a/g/n (3x3)]

Mobile Broadband* & GPS: Dell Wireless 5720 (EvDO &
GPS) Mobile Broadband mini card, Dell Wireless 5530 (Tri-
band HSDPA 7.2/HSUPA 2.0 & GPS) Mini-Card

Bluetooth: Dell Wireless 365 Bluetooth® 2.1

Security

Physical Security:

Mag-Alloy-reinforced Cable Lock Slots

User & System Security:

Smart Card Reader
Fingerprint Reader (optional)
TPM 1.2*
Dell ControlPoint Security Manager
Dell ControlVault™

Network Security:

802.11 Wi-Fi Protected Access (WPA), 802.11i (WPA2),
Virtual Private Networks (VPN) 802.1x with EAP modes and
compatible with CCX 4.0

Collaboration

speaker, digital microphone

Expandability

Slots:

SD/MMC media card reader; Expresscard/34

Docking:

E-Port, E-Port Plus, E-Legacy Extender, E-Flat Panel Stand, E-
Monitor Stand, E-View Laptop Stand, E-Media Bay

Ports

1394, docking connector, USB 2.0 (x1) with USB
PowerShare, eSATA/USB Combo (x 1), VGA, RJ-45, Power,
headphone/speaker out, mic

Input

Touch Pad/Single-pointing, Backlit keyboard option



[illegible]

System Configurations

NOTE: Offering may vary by region.

Operating System NOTE: One of the following Operating Systems will be preinstalled.	E4300 & E4200
Microsoft® Windows Vista® operating system	Genuine Windows Vista® Ultimate Genuine Windows Vista® Business Genuine Windows Vista® Business 64-Bit Genuine Windows Vista® Home Basic (SPI when available)
Microsoft® Windows® XP Professional	Genuine Windows Vista Ultimate or Business Downgrade, Genuine Windows® XP Professional installed* (SP3 when available)
Other	SUSE® Linux® Enterprise Desktop (SLED) (China only), FreeDOS
OS Media Support	Can order with or without media

Chipset	E4300 & E4200
Mobile Intel® GS45 Express Chipset	x
TPM 1.2 Security Device (Trusted Platform Module) (where available)	x
Intel® 82567 Gigabit Ethernet Controller	x

E4300 Processor – Power Optimized Performance SFF (speed, system bus, wattage, cache)

Intel® Core™ 2 Duo Processor SP9400 (2.40GHz, 1066MHz FSB, 25 watts, 6MB L2 cache)

Intel Core 2 Duo Processor SP9400 (2.16GHz, 1066MHz FSB, 25 watts, 6MB L2 cache)

E4200 Processor – Dual Core Ultra-low Voltage (speed, system bus, wattage, cache)

Intel Core 2 Duo Processor SU9400 (1.40GHz, 800MHz FSB, 10 watts, 3MB L2 cache)

Intel Core 2 Duo Processor SU9300 (1.20GHz, 800MHz FSB, 10 watts, 3MB L2 cache)

NOTE: Processor numbers are not a measure of performance.



Memory

Both E4300 and E4200 offers latest dual channel DDR3 memory* technology. E4300 supports a maximum of 8GB of memory and E4200 supports a maximum of 5GB of memory; however, 32-bit operating systems, such as the 32-bit version of Microsoft® Windows® XP, can only use a maximum of 4GB of address space. Moreover, certain components within the computer require address space in the 4GB range. Any address space reserved for these components cannot be used by computer memory; therefore, the amount of memory available to a 32-bit operating system is less than 4GB.

NOTE: Greater than 4GB memory requires 64-bit operating systems.

Memory modules should be installed in pairs of matched memory size, speed, and technology. If the memory modules are not installed in matched pairs, the computer will continue to operate

Memory*	E4300
Technology	Dual Channel DDR3
DIMM slots	2
DIMM speed	1066 MHz
Minimum Memory Configuration	1GB (1DIMM)
Maximum Memory Configuration	8GB*
DIMM Configurations	8GB* (2 x 4GB); 4GB* (1 x 4GB) 4GB* (2 x 2GB); 3GB (1 x 2GB, 1 x 1GB) 2GB (1 x 2GB); 2GB (2 x 1GB) 1GB (1 x 1GB)
Memory*	E4200
Technology	Dual Channel DDR3
DIMM slots	1GB on board and one DIMM slot
DIMM speed	1066 MHz (running at 800MHz)
Minimum Memory Configuration	1GB (onboard)
Maximum Memory Configuration	5GB*
DIMM Configurations	5GB* (1 x 4GB); 3GB (1 x 2GB, 1 x 1GB) 2GB (2 x 1GB); 1GB (1 x 1GB)



Primary Storage

Size, type, speed	E4300	E4200
80GB* SATA 5400 RPM	x	
80GB * SATA 7200 RPM	x	
160GB * SATA 5400 RPM	x	
160GB* SATA 7200 RPM	x	
250GB* SATA 7200 RPM	x	
120GB* SATA Full Disk Encryption 5400 RPM	x	
160GB* SATA Full Disk Encryption 7200 RPM	x	
64GB* Solid State Ultra Performance	x	x
64GB* Solid State Mobility	x	x
128GB* Solid State Mobility	x	x

Specialty Storage Options

Full Disk Encryption hard drives provide hardware encrypted data protection which can be activated within a few seconds centrally and can be much safer than software based encryption.

Ultra Performance Solid State Drive delivers the best in solid state technology with extreme performance, highest reliability rating¹ and longest lifecycle. These drives outperform even the fastest desktop SATA 10,000 rpm hard drives,.

Mobility Solid State Drives offer highly reliable and durable, storage, while trading extreme performance for high capacities and a low price. The Mobility SSD is better performing than any standard notebook hard drive, but not as high as Ultra Performance SSD.

Intel Rapid Recover Technology (IRRT)

The IRRT feature uses RAID 1 mirroring functionality to copy data from the system primary drive to an external eSATA recovery drive. This gives the user additional security as their hard disk contents can be backed up at any time when connected to an external eSATA drive through the system eSATA port or through the E-Port Docking system. Data recovery is made easy with the IRRT feature.

¹ Based on Mean Time Between Failure (MTBF) of 2M for Ultra Performance SSD vs. 1M for Mobility SSD and 550K for standard Dell 2.5" HDD, per Dell HDD spec.



Removable Storage

Fixed Optical Drive		E4300
DVD+/-RW		8x SATA Roxio® & Cyberlink PowerDVD™ software
DVD-ROM		8x SATA Cyberlink PowerDVD software
External Media Base & eSATA E-Modular Bay		E4300 & E4200
Media Base with DVDRW		Optional for E4200 only
E-Modular Bay with DVD, Combo & DVD+/-RW		Optional for Both

Additional Hard Drive with External E-Modular Bay	E4300 & E4200
120GB* SATA 5400 RPM	
64GB* Solid State Ultra Performance	

Expandability – external slots and ports

Expansion Slots		E4300 & E4200
SD/MMC Media Card Reader	Card supported: SD, SDIO, SD HC, Mini SD, MMC, MMC+, Mini MMC	Standard
ExpressCard 34	ICH Controller 1.5V and 3.3V (R5538 power switch) 28 pin connector size (I) PCIE x1 (I) USB	Standard



Ports and Connectors		E4300 & E4200
USB 2.0	2 Total 4-pin USB 2.0 compliant connectors Total includes one with powered USB and one with eSATA functionality	Both
IEEE 1394	IEEE 1394a 4-pin connector	Both
Video	VGA	Both
Network Adapter	RJ-45 network adapter	Both
Audio	Two channel high definition audio IDT 92HD71B Controller Stereo conversion: 24-bit (analog-to-digital and digital-to-analog) Interfaces: Internal - high-definition audio codec External - microphone-in connector and stereo headphones/speakers connector Speakers: two 1-watt, 4-ohm speakers Internal speaker amplifier: 1 watt per channel, 4 ohms Internal microphone: single digital microphone Volume control buttons	E4300 only
Audio	Two channel high definition audio IDT 92HD71B Controller Stereo conversion: 24-bit (analog-to-digital and digital-to-analog) Interfaces: Internal - high-definition audio codec External - microphone-in connector and stereo headphones/speakers connector Speakers: one 2-watt, 4-ohm speaker Internal speaker amplifier: 2W per channel into 4 ohms Internal microphone: single digital microphone Volume control buttons	E4200 only
Webcam	Optional 640 x 480 pixels (VGA)	E4300 only



Dell Wireless 1397 (802.11g)

Host interface	PCI Express™ Half Mini-Card
Network standard	IEEE 802.11b and 802.11g
Wi-Fi Alliance Certifications	802.11b, 802.11g, WPA, WPA2, WMM
Operating Frequency Bands	2.4 GHz
Dual Diversity Antenna Switching	Dual diversity antenna switching for systems designed with main and auxiliary antennas
Data Rate	802.11g - Up to 54 Mbps / 802.11b - Up to 11 Mbps
Typical Range Indoor	802.11g: 100 ft* (30 m) @ 54 Mbps*; 200 ft* (60 m) @ 18 Mbps*
Typical Range Outdoor	802.11b: 260 ft* (80 m) @ 11 Mbps*; 410 ft* (125 m) @ 1 Mbps* 802.11g: 200 ft* (60 m) @ 54 Mbps*; 490 ft* (150 m) @ 18 Mbps* 802.11b: 650 ft* (200 m) @ 11 Mbps*; 1300 ft* (400 m) @ 1 Mbps*
Receive Sensitivity	802.11g: -73 dBm @ 54 Mbps; -86 dBm @ 18 Mbps 802.11b: -88 dBm @ 11 Mbps; -95 dBm @ 1 Mbps
Power Consumption	TX Average - 759 mW, RX Average - 505 mW
Security Authentication EAP Methods	Open, Shared, WPA, WPA-PSK, WPA2, WPA2-PSK, CCKM MD5, LEAP, EAP-FAST, EAP-TLS, EAP-TTLS (PAP, CHAP, MD5, MS-CHAP, MS-CHAPv2), PEAP (TLS, MS-CHAPv2, GTC)
Single Sign On	Open, Shared, MD5, LEAP, EAP-FAST, EAP-TLS, EAP-TTLS (PAP, CHAP, MD5, MS-CHAP, MS-CHAPv2), PEAP (TLS, MS-CHAPv2, GTC), Smart Cards
Encryption Cisco Compatible Extensions	WEP (64 bit/128 bit), CKIP, TKIP, AES-CCMP Version 4
Client Utility	Wireless profile and security management, site monitor, link status, adapter configuration and diagnostics
Software Support	Microsoft® WHQL certified for Windows® XP and Windows® Vista
Radio On/Off	Hardware and software on/off disables transmit and receive to comply with aviation in-flight restrictions
LED output	Wireless enable and wireless activity. Compatible with Dell Wi-Fi Catcher™ to indicate via LED presence of Wi-Fi.
Humidity	Up to 95%
Temperature	Operational 0 to 75C; Storage -40 to 80C
Roaming	Seamless roaming between 802.11b and 802.11b/g access points



Dell Wireless 1510 (802.11 a/g/Draft n 2x2)

Host interface	PCI Express™ Half Mini-Card
Network standard	IEEE 802.11a, 802.11b, 802.11g, and 802.11 Draft n
Wi-Fi Alliance Certifications	802.11a, 802.11b, 802.11g, WPA, WPA2, WMM
Operating Frequency Bands	2.4 GHz (802.11b/g/n) and 5 GHz (802.11a/Draft n)
Dual Diversity Antenna Switching	Dual diversity antenna switching for systems designed with main and auxiliary antennas 2x2 MIMO operation when in 802.11n mode with 2x2 or greater Access Point
Data Rate	802.11 Draft n - Up to 300 Mbps*; 802.11a/g - Up to 54 Mbps 802.11b - Up to 11 Mbps
Typical Range Indoor	802.11n: 25 ft*(7 m) @ 300 Mbps*; 100 ft *(30 m) @ 108 Mbps* 802.11a: 75 ft* (23 m) @ 54 Mbps*; 160 ft* (50 m) @ 18 Mbps* 802.11g: 100 ft* (30 m) @ 54 Mbps*; 200 ft* (60 m) @ 18 Mbps* 802.11b: 260 ft*(80 m) @ 11 Mbps*; 410 ft* (125 m) @ 1 Mbps*
Typical Range Outdoor	802.11n: 60 ft* (18 m) @ 300 Mbps*; 225 ft* (68 m) @ 108 Mbps* 802.11a: 160 ft* (50 m) @ 54 Mbps*; 460 ft* (140 m) @ 18 Mbps* 802.11g: 200 ft* (60 m) @ 54 Mbps*; 490 ft* (150 m) @ 18 Mbps* 802.11b: 650 ft* (200 m) @ 11 Mbps*; 1300 ft* (400 m) @ 1 Mbps*
Receive Sensitivity	802.11 Draft n: -66 dBm @ 300 Mbps*; -75dBm @ 108 Mbps* 802.11g: -73 dBm @ 54 Mbps*; -86 dBm @ 18 Mbps* 802.11b: -88 dBm @ 11 Mbps*; -95 dBm @ 1 Mbps* 802.11a: -72 dBm @ 54 Mbps*; -86 dBm @ 18 Mbps*
Power Consumption	TX Peak - 2056 mW, RX Peak - 2059 mW
Security Authentication EAP Methods Single Sign On	Open, Shared, WPA, WPA-PSK, WPA2, WPA2-PSK, CCKM MD5, LEAP, EAP-FAST, EAP-TLS, EAP-TTLS (PAP, CHAP, MD5, MS-CHAP, MS-CHAPv2), PEAP (TLS, MS-CHAPv2, GTC) Open, Shared, MD5, LEAP, EAP-FAST, EAP-TLS, EAP-TTLS (PAP, CHAP, MD5, MS-CHAP, MS-CHAPv2), PEAP (TLS, MS-CHAPv2, GTC), Smart Cards WEP (64 bit/128 bit), CKIP, TKIP, AES-CCMP Version 4
Client Utility	Wireless profile and security management, site monitor, link status, adapter configuration and diagnostics
Software Support	Microsoft® WHQL certified for Windows® XP and Windows® Vista
Radio On/Off	Hardware and software on/off disables transmit and receive to comply with aviation in-flight restrictions
LED output	Wireless enable and wireless activity. Compatible with Dell Wi-Fi Catcher™ to indicate via LED presence of
Humidity	Up to 95%
Temperature	Operational 0 to 75C; Storage -40 to 80C
Roaming	Seamless roaming between 802.11a, 802.11b, 802.11b/g, and 802.11n access points

Wireless Communications -Wi-Fi (WLAN)^{Latitude E4300 & E4200 Technical Guidebook}

Intel® WiFi Link 5100 [802.11a/g/Draft n (1x2)]	
Host interface	Mini Card form factor, based on PCIe electrical interface
Network standard	IEEE 802.11a/b/g/Draft-N
Wi-Fi Alliance Certifications	Wi-Fi Certified for 802.11a, 802.11b, 802.11g, WMM, WPA, and WPA2 (Wi-Fi Alliance Draft-N1 and 802.11n certifications expected when available)
Operating Frequency Bands	2.4 GHz and 5.0 GHz
Dual Diversity Antenna Switching	Support for up to two antennas enable better wireless reception at the same distance when compared to 802.11a/b/g solutions
Data Rate	802.11 Draft n - Up to 300 Mbps* 802.11a/g - Up to 54 Mbps* 802.11b - Up to 11 Mbps*
Power Consumption	Optimized power modes (sleep states) help reduce power consumption during periods of inactivity
Authentication	WPA and WPA2, 802.1X, LEAP, EAP-TLS, PEAP-TLS, and PEAP-MSCHAPv
Protocols Encryption	CKIP, TKIP, 64-bit and 128-bit WEP (for 802.11a/b/g), AES-CCMP (for 802.11a/b/g/Draft-N)
Product Safety	UL, C-UL, CB (IEC 60950)
Client Utility	Intel® PROSet/Wireless Software v12.0
Software Support	Microsoft® WHQL certified for Windows® XP and Windows® Vista; Linux
Radio On/Off	Supported in both hardware and software
LED output	Single WLAN-LED (as per Mini Card specification)
Humidity Non-Operating	50% to 90% RH non-condensing (at temperatures of 25° C to 35° C)
Temperature Operating	0 to +80° C
Roaming	Supports seamless roaming between respective access points (802.11b, 802.11g, 802.11a/b/g, and 802.11a/b/g/Draft-N)



Intel® WiFi Link 5300 [802.11a/g/Draft n (3x3)]	
Host interface	Mini Card form factor, based on PCIe electrical interface
Network standard	IEEE 802.11a/b/g/Draft-N
Wi-Fi Alliance Certifications	Wi-Fi Certified for 802.11a, 802.11b, 802.11g, WMM, WPA, and WPA2 (Wi-Fi Alliance Draft-N1 and 802.11n certifications expected when available)
Operating Frequency Bands	2.4 GHz and 5.0 GHz
Dual Diversity Antenna Switching	Support for up to three antennas enable better wireless reception at the same distance when compared to 802.11a/b/g solutions
Data Rate	Up to 450 Mbps*
Power Consumption	Optimized power modes (sleep states) reduce power consumption during periods of inactivity
Authentication	WPA and WPA2, 802.1X, LEAP, EAP-TLS, PEAP-TLS, and PEAP-MSCHAPv
Protocols Encryption	CKIP, TKIP, 64-bit and 128-bit WEP (for 802.11a/b/g), AES-CCMP (for 802.11a/b/g/Draft-N)
Product Safety	UL, C-UL, CB (IEC 60950)
Client Utility	Intel® PROSet/Wireless Software v12.0
Software Support	Microsoft® WHQL certified for Windows® XP and Windows® Vista; Linux
Radio On/Off	Supported in both hardware and software
LED output	Single WLAN-LED (as per Mini Card specification)
Humidity Non-Operating	50% to 90% RH non-condensing (at temperatures of 25° C to 35° C)
Temperature Operating	0 to +80° C
Roaming	Supports seamless roaming between respective access points (802.11b, 802.11g, 802.11a/b/g, and 802.11a/b/g/Draft-N)



Wireless Communications - Mobile Broadband (WWAN)

Dell Wireless 5530 (Tri-band HSDPA 7.2/HSUPA 2.0 & GPS)

Carrier	AT&T	Vodafone	TeliaSonera	Telstra
Network	HSPA 3G	HSPA 3G	HSPA 3G	HSPA 3G
Speed (Downlink)	700 Kbps* – 1.7 Mbps*	< 3.6 Mbps*	< 3.6 Mbps*	< 7.2 Mbps*
Speed (Uplink)	500 Kbps* – 1.2 Mbps*	< 300 Kbps*	< 300 Kbps*	< 300 Kbps*
Fallback Network	EDGE	GPRS	GPRS	GPRS
Fallback Speed	70 - 135 Kbps*	UMTS 384 Kbps* GPRS 45 Kbps*	UMTS 384 Kbps* GPRS 45 Kbps*	UMTS 384 Kbps* GPRS 45 Kbps*
Frequency Bands	850/1900/2100 HSPA 850/900/1800/1900 EDGE	850/1900/2100 HSPA 850/900/1800/1900 EDGE	850/1900/2100 HSPA 850/900/1800/1900 EDGE	850/1900/2100 HSPA 850/900/1800/1900 EDGE
SIM	Yes	Yes	Yes	Yes



Wireless Communications - Mobile Broadband (WWAN)

Dell Wireless 5720 (EV-DO Rev A & GPS)

Carrier	Verizon Wireless	Sprint	TELUS
Network	EV-DO Rev A	EV-DO Rev A	EV-DO Rev A
Speed (Downlink)	600 Kbps* - 1.4 Mbps*	600 Kbps* - 1.4 Mbps*	600 Kbps* - 1.4 Mbps*
Speed (Uplink)	500 - 800 Kbps*	350 - 500 Kbps*	350 - 500 Kbps*
Fallback Network	CDMA 1xRTT	CDMA 1xRTT	EV-DO Rev 0 CDMA 1xRTT
Fallback Speed	60 - 80 Kbps*	60 - 80 Kbps*	400 - 700Kbps* (Rev 0) 60 - 70 Kbps* (1xRTT)
Frequency Bands	850/1900	1900	1900 EVDO 800/1900 1xRTT
SIM	No	No	No



Wireless Communications - Bluetooth

Dell Wireless 365 Bluetooth 2.1

Manufacturer	Broadcom
Wireless PAN Standard	BT2.1 (Windows XP) / BT2.0 (Windows Vista)^ ^Vista upgradeable via SW update to BT2.1 in Q4 2008
Form Factor	Module
Data Rates	Up to 3 Mbps*
Frequency Band	2.4GHz
Range	Up to 7 m (23 ft*)
Bluetooth Profiles Supported	Includes Streaming Stereo Quality Audio (A2DP), File transfer (FTP/OBEX), Dial-up Networking (DUN), Mice/Keyboards (HID), Printing (BPP), Digital Image Management (transfer, print, remote camera operation) (BIP), Fax (FAX), Headset (HSP) and more.
Data Encryption	128-bit encryption
Output Power	Power class 2; Max 4 dBm (2.4 mW)
Receive Sensitivity	-88 dBm
Temperature	Operational 0 to 75C; Storage -40 to 80C
Humidity	Up to 95%
Software	Microsoft Windows XP and Vista Support



Wired Communications

Network Adapter (NIC)

Intel® 82567 Gigabit Ethernet Controller	Integrated on system board
External connector type	RJ-45
Data Rates	10/100/1000 Mbps
Controller bus architecture	PCI-e V1.1x1
Power consumption (full operation per data rate connection speed)	1000 Mbps*: 680 mW 100 Mbps*: 238 mW 10 Mbps*: 221 mW
Power consumption (standby operation)	No Link (low power mode): 55mW No Link (w/WOL): TBD 10 Mbps Idle (w/WOL): 141 mW 100 Mbps Idle (w/WOL): 238 mW
IEEE standards compliance	802.3, 802.3ab, 802.3u
Boot ROM Support	PXE, RPL
Network Transfer Rate	Full duplex at 10, 100, or 1000 Mbps* and half duplex at 10 or 100 Mbps*.
Operating Temperature	-20° C to 70° C (-4° F to 158° F)
Operating Humidity	20% to 80% (non-condensing)
Operating System Driver support	DOS, NT, Win2K, Netware, XP, Vista 32/64bit
Manageability	WOL, PXE
Management Capabilities Alerting	ASF 2.0



Security

Security Hardware		E4300 & E4200
Fingerprint Reader	UPEK TCS3 TouchStrip™ strip sensor with CMOS active capacitive pixel-sensing technology	Optional on both
Trusted Platform Module (TPM)	TPM 1.2	Standard on both
Smart Card Reader		Standard on both
Contactless Smart Card Reader	See chart below	Optional on E4300
Dell ControlVault™		Standard on both

		Protocols Supported				Functionality (See Codes Below)
		ISO/IEC 14443 TypeA	ISO/IEC 14443 Type B	ISO/IEC 18092	ISO/IEC 15693	
TECHNOLOGIES	iCLASS®		X		X	A
	MIFARE®	X				B
	Sony FeliCa®			X		B
	ISO/IEC 14443 Type A/B	X	X			C
	ISO/IEC 15693				X	D
	NFC	X		X		E

A = Card Serial Number (CSN) Read, HID Secure Application Area Read, and Read / Write of All Other Application Areas. iCLASS specific anti-collision to support multiple cards in the field. HID Secure Application can be used for pre-boot authentication

B = Read of Card Serial Number (MIFARE: UID, FeliCA: IDm) for pre-boot authentication and via PC/SC 2.01, raw frame communication allowing implementation of both security protocols at application level, MIFARE anti-collision to support multiple cards in the field.

C= ISO/IEC 14443 Part 4 communication via PC/SC 2.01, raw frame communication, anti-collision to support multiple cards in the field. CHUID from FIPS-201 PIV-II cards can be used for pre-boot authentication. Includes support for MIFARE/DESFire in native, wrapped and ISO communication modes.

D = UID read (can be used for pre-boot authentication), raw frame communication, PC/SC 2.01 synchronous card support for specific chip types, anti-collision to support multiple cards in the field.

E = Ability to act as NFC passive mode initiator at 106 kbits/s and 212 kbits/s

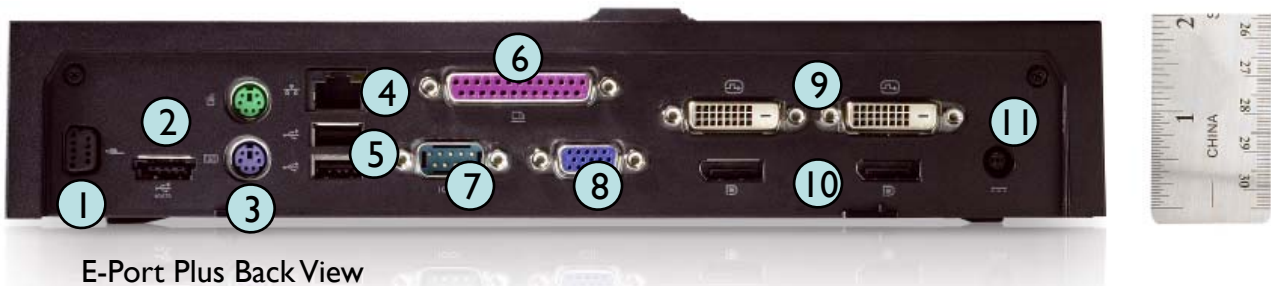
**Sources: HID Global*



E Family Docking

E-Port Plus

Key Features	Dual Digital Monitor capabilities along with legacy ports. The non-compromise station designed for enhanced usability at desk. Supports hot docking and undocking.
Dimension (h x d x w)	2.11" x 6.69" x 11.33" (53.7 x 170 x 288 mm)
Weight	2.3 lb (1.05kg)
Power Supply	130W External AC Adapter (Dell Latitude) 210W External AC Adapter (Dell Precision)
Video Ports	VGA, 2 x Display Ports, 2 x DVI-D
Legacy Ports	Serial, Parallel, 2 x PS/2
Ports	6 x USB, Powered eSATA (shared with 1 USB), RJ-45, Audio and Mic, Lock Slot, E-Monitor Stand Connector



(1) E-Monitor Stand Connector

(2) eSATA

(3) PS/2

(4) Network Connector (RJ-45)

(5) USB x 2

(6) Parallel Port

(7) Serial Port

(8) VGA

(9) DVI x 2

(10) Display Port x 2

(11) AC Adapter Connector



E Family Docking

E-Port	
Key Features	A space-saving port replicator suitable for home and office environment which enables connection to your desk peripherals. Supports hot docking and undocking .
Dimension (h x d x w)	2.11" x 6.69" x 7.87" (53.7 x 170 x 200 mm)
Weight	1.72 lb (0.78kg)
Power Supply	130W External AC Adapter (Dell Latitude) 210W External AC Adapter (Dell Precision)
Video Ports	VGA, Display Port, DVI-D
Ports	6 x USB, Powered eSATA (shared with 1 USB), RJ-45, Audio and Mic, Lock Slot, E-Monitor Stand Connector



- (1) E-Monitor Stand Connector
- (2) eSATA
- (3) USB x 2
- (4) Network Connector (RJ-45)
- (5) VGA
- (6) DVI
- (7) Display Port
- (8) AC Adapter Connector

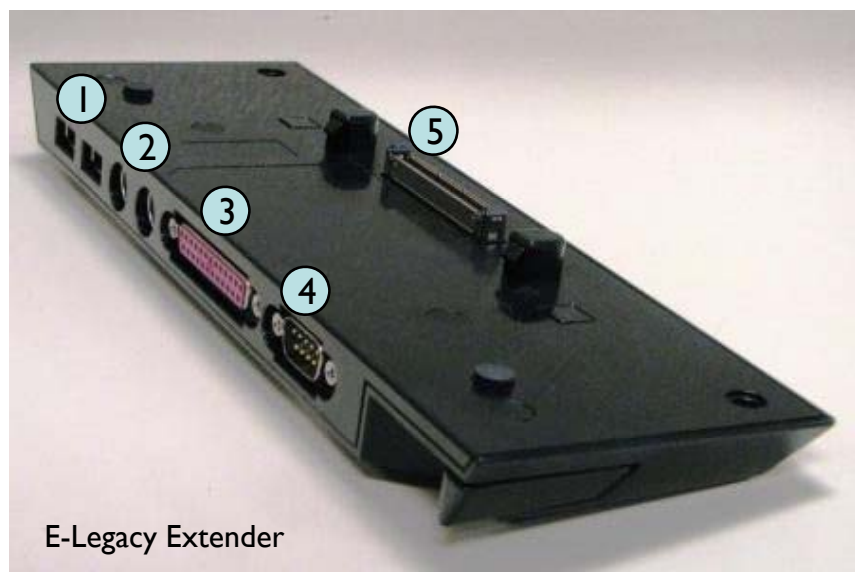


E Family Docking

E-Legacy Extender

Key Features	A lightweight (0.45lb,0.2kg) adapter that can be attached to the bottom of the notebooks adding parallel, serial, PS/2 and 2 USB connectors.
Dimension (h x d x w)	0.78" x 3.12" x 9.59" (19.9 x 79.3 x 243.5 mm)
Weight	0.45 lb (0.21 kg)
Power Supply	N/A (attached to the bottom of the system through docking connector)
Ports	Serial, Parallel, 2 x PS/2, 2 x USB

- (1) 2 x USB
- (2) 2 x PS/2
- (3) Parallel Port
- (4) Serial Port
- (5) Docking Connector



Graphics Controller

	Intel GMA 4500MHD Integrated Graphics
Graphics Memory	Windows XP: up to 1GB shared with 2GB of system memory* Windows Vista: up to 783MB shared with 2GB of system memory*
Bus Type	PCIe X16
Memory Interface	N/A
Clock Speeds	533MHz graphics core
Estimated Maximum Power Consumption	12W
Display Support	VGA + DisplayPort Single-link DVI (requires optional E-Port or E-Port Plus)
Maximum Color Depth	32bit (16.7 million)
Maximum Vertical Refresh Rate	Up to 85Hz depending on resolution
Operating Systems Graphics/ Video API Support	DirectX 10, OpenGL 1.3
Supported Resolutions and Max Refresh Rates (Hz) (Note: Analog and/or digital)	Max Digital: 2560x1600/32bpp @60Hz Analog: 1600x1200/32bpp @ 85Hz Min: 640x480/8bpp @ 60Hz



LCD Panel

	E4300	E4200
Type	13.3" LED Backlit LED Anti-Glare	12.1" Backlit LED Anti-Glare
Luminance/Brightness (typical)	300 cd/m ²	300 cd/m ²
Dimensions		
Height	286.1 mm (11.26")	261.1 mm (10.28")
Width	178.8 mm (7.04")	163.2 mm (6.43")
Diagonal	13.3 inch	12.1 inch
Native Resolution	1280 x 800	1280 x 800
Megapixels	1.0 MP	1.0 MP
Pixels per Inch (PPI)	113.6	124.5
Contrast Ratio	400:1	400:1
Response Time (typical)	16 ms	16 ms
Refresh Rate	60 Hz	60 Hz
Horizontal Viewing Angle	40, 40	40, 40
Vertical Viewing Angle	15, 30	15, 30
Pixel Pitch	0.2235 mm	0.204 mm
Power Consumption (typical)	1.50 W @ 60 cd/m ² 4.35 W @ 300 cd/m ²	1.36 W @ 60 cd/m ² 3.34 W @ 300 cd/m ²



Batteries – E4300

	E4300 Primary 3-cell	E4300 Primary 6-cell	E4300 6-cell Battery Slice
Battery Capacity	30WHr	56WHr or 60WHr	48WHr
Cell Capacity	2.8Ahr [^]	2.6Ahr or 2.8Ahr [^]	2.15Ahr
Voltage	11.1 VDC	11.1 VDC	11.1 VDC
LED Charge & Health Gauge	Yes	Yes	Yes
Weight (lbs)	0.4	0.73	1.56
Weight (kg)	0.18	0.33	0.71
Dimensions (inches)	7.95 x 1.14 x 0.83	7.95 x 1.97 x 0.83	12.20 x 12.6 x 0.39
Dimensions (mm)	202 x 29 x 21	202 x 50 x 21	310 x 320 x 10
ExpressCharge Capable	No [^]	Yes	No
Temperature range: Operating	0° to 35°C 32° to 95°F	0° to 35°C 32° to 95°F	0° to 35°C 32° to 95°F
Storage	-40° to 60°C -40° to 140°F	-40° to 60°C -40° to 140°F	-40° to 60°C -40° to 140°F

[^] Note: 2.6Ahr cell supports ExpressCharge. And, 2.8Ahr cell supporting ExpressCharge will be available in Spring 2009.



Batteries – E4200

	E4200 Primary 4-cell	E4200 Primary 6-cell (3+3 Hybrid)	E4200 6-cell Battery Slice
Battery Capacity	28WHr	58WHr	48WHr
Cell Capacity	1.95Ahr	1.95/2.8Ahr	2.15Ahr
Voltage	14.8 VDC	11.1 VDC	11.1 VDC
LED Charge & Health Gauge	Yes	Yes	Yes
Weight (lbs)	0.44	0.83	1.34
Weight (kg)	0.2	0.38	0.61
Dimensions (inches)	8.27 x 1.83 x 0.65	8.11 x 1.85 x 0.78	7.32 x 10.98 x 0.37
Dimensions (mm)	210 x 46.5 x 16.5	210 x 67.5 x 22.3	186 x 279 x 9.5
ExpressCharge Capable	Yes	No	No
Temperature range: Operating	0° to 35°C 32° to 95°F	0° to 35°C 32° to 95°F	0° to 35°C 32° to 95°F
Storage	-40° to 60°C -40° to 140°F	-40° to 60°C -40° to 140°F	-40° to 60°C -40° to 140°F



Battery LED Charge and Health Gauge

Latitude batteries have an LED gauge on the bottom of the battery that provides information on charge and health status of the battery at the touch of a button.

The battery charge gauge will display immediately at the touch of the button..

	100% – 80% charge is remaining
	79 – 75% charge is remaining
	74 – 70% charge is remaining
	69 – 65% charge is remaining
	64 – 60% charge is remaining
	59% or less charge is remaining

The battery health status will display after holding the battery check button down for more than 3 seconds. The health gauge display will illuminate after the charge gauge reports the batteries current remaining charge.

	100% – 80% charge performance is remaining
	79 – 75% charge performance is remaining
	74 – 70% charge performance is remaining
	69 – 65% charge performance is remaining
	64 – 60% charge performance is remaining
	59% or less charge performance is remaining

Note: Battery pack shall be operational at charge performance less than 59%.

Five flashing LEDs displayed indicate a permanent failure of the battery.



AC Adapters

Compatibility Matrix		E6500 E6400, E6400 ATG	E5400 E5500	E4300	E4200	E-Port Plus E-Port
D-Family Adapters	45W	Not Supported ¹	Not Supported ¹	Supported ²	Standard	Not Supported ¹
	D65W	Supported ²	Supported ²	Supported	Supported	Not Supported ¹
	D90W	Supported	Standard	Supported	Supported	Not Supported ¹
Auto-Air	Dell Slim 65W Auto/Air/AC	Supported ²	Supported ²	Supported	Supported	Not Supported ¹
E-Family Adapters	E65W	Supported ²	Supported ²	Standard	Supported	Not Supported ¹
	E90W	Standard	Supported	Supported	Supported	Not Supported ¹
	E130W	Supported	Supported	Supported	Supported	Standard

¹ BIOS will notify customer to change adapter or undock.² Battery charging may be slower when system is powered on.

Adapter Specifications	65w Travel	65w	90w	130w
Input voltage	AC: 100 to 240 VAC DC: 11 to 16 VDC	90 to 264 VAC	100-240 VAC	100-240VAC
Input current (max)	AC: DC:	1.7A	1.5A	1.8A
Input frequency	AC: 50 to 60 Hz DC: 8A	47 to 63 Hz	50 to 60 Hz	50 to 60 Hz
Output current	3.34 A (continuous)	4.34 A Max at 4 second pulse 3.34 A (continuous)	5.62 A (max at 4 second pulse) 4.62 A (continuous)	6.7A Continuous (7.7A peak for 4s)
Rated output voltage	19.5 VDC	19.5 VDC	19.5 VDC	19.5 VDC
Weight (lbs) ³	0.72	0.64	.76	1.14
Weight (kg) ³	0.33	0.29	0.35	0.52
Dimensions (inches)	0.63 x 2.6 x 5.0	0.6 x 2.6 x 5.0	0.6 x 2.8 x 5.8	1.0 x 3.0 x 6.1
Dimensions (mm)	16 x 65 x 127	16 x 66 x 127	16 x 70 x 147	25 x 76 x 155
Temperature range: Operating	0° to 35°C 32° to 95°F	0° to 35°C 32° to 95°F	0° to 35°C 32° to 95°F	0° to 35°C 32° to 95°F
Storage	-40° to 65°C -40° to 149°F	-40° to 65°C -40° to 149°F	-40° to 65°C -40° to 149°F	-40° to 65°C -40° to 149°F

³ 3-pin AC Adapter weight

*See important information at end of document

Keyboard and Mouse

Keyboard

Number of keys	83 (U.S. and Canada); 84 (Europe); 87 (Japan)
Layout	QWERTY/AZERTY/Kanji
Size	full sized (19-mm key pitch)
Backlit keyboard option	<p>LED Backlit keyboards allow for easier work in darker settings.</p> <ul style="list-style-type: none"> • Easy enable/disable via hotkey <Fn+right arrow key> or Display Settings in Dell ControlPoint • 10 variable brightness levels • Dell ControlPoint can be used to customized brightness settings • Works in conjunction with ambient light sensor

Touch Pad (E4300)

X/Y position resolution	240dpi
Size	<p>Width: 68-mm (2.677-inch) sensor-active area</p> <p>Height: 37.63-mm (1.481-inch) rectangle</p>

Touch Pad (E4200)

X/Y position resolution	<p>X: 480 +/- 40 cpi</p> <p>Y: 630 +/- 50 cpi</p>
Size	<p>Width: 58.9 mm</p> <p>Height: 33.6 mm</p>



Environmental and operating conditions

Temperature Range	Operating 0° to 35°C (32° to 95°F) Storage -40° to 65°C (-40° to 149°F)
Relative humidity (maximum)	Operating 10% to 90% (noncondensing) Storage 5% to 95% (noncondensing)
Maximum vibration (using a random vibration spectrum that simulates user environment)	Operating 0.66 GRMS Storage 1.3 GRMS
Maximum shock (Measured with hard drive in operating status and a 2-ms half-sine pulse for operating specification. Also measured with hard drive in head-parked position and a 2-ms halfsine pulse for storage specification)	Operating 143 G Storage 163 G
Altitude (maximum)	Operating -15.2 to 3048 m (-50 to 10,000 ft) Storage -15.2 to 3048 m (-50 to 10,000 ft)

Link to Product Safety, EMC and Environmental Data Sheets:

http://www.dell.com/content/topics/global.aspx/about_dell/values/regulatory_compliance/dec_conform?c=us&cs=04&l=en&s=bsd&redirect=1



Important Information

All Day Computing/Battery Life: Preliminary results based on Dell lab testing. Varies by configuration, operating conditions and other factors. Maximum battery capacity decreases with time and use.

Anytime, Anywhere Connectivity: Subject to wireless provider's coverage area. Mobile broadband subscription required, additional charges apply.

Wireless Connectivity: Where wireless access is available. Additional access charges apply in some locations. Accessibility to company networks may be affected by firewalls or other privacy measures.

Graphics & System Memory: Significant system memory may be used to support graphics, depending on system memory size and other factors.

Memory: Up to 1 GB may not be available with 32-bit operating systems due to system resource requirements.

Hard Drives: For writeable storage devices, GB = 1 billion bytes and TB = 1 trillion bytes; actual capacity varies with preloaded material and operating environment and will be less.

Mobile Broadband average download speeds: For comparative purposes only. Actual speed varies and will be less. Range may vary due to number of users, interference and other factors.

TPM 1.2: Not available in all regions

E4300 Weight: Starting weight with 3-cell, 64GB SDD and Travel Lite module is 3.3lbs/1.50kg. Weight varies with configuration and manufacturing variability.

E4300 Dimensions: At front of system with 13.3" LED display

E4200 Weight: Starting weight with 4-cell and 64GB SSD option is 2.2lbs/1.0kg. Weight varies with configuration and manufacturing variability.

E4200 Dimensions: Height at front of system with 12.1" LED display

Limited Hardware Warranty: For a copy of limited hardware warranty, write Dell USA LP, Attn: Warranties, One Dell Way, Round Rock, TX 78682 or visit www.dell.com/warranty."

CompleteCare Accidental Damage Service: CompleteCare service excludes theft, loss, and damage due to fire, flood or other acts of nature, or intentional damage. Customer may be required to return unit to Dell. For complete details, visit www.dell.com/servicecontracts.

International Service: Service may be provided by third party. Availability limited. Other conditions apply. See www.dell.com/intlsvc for current list of eligible systems and selected countries. External devices excluded; availability of specific parts varies in each country.

Copyright 2008 Dell Inc. All rights reserved. Intel and Core are trademarks or registered trademarks of Intel Corporation or its subsidiaries in the United States of America and other countries. Microsoft, Windows, and Windows Vista are registered trademarks of Microsoft Corporation. Other trademarks or trade names may be used in this document to refer to either the entities claiming the marks and names or their products. Dell disclaims proprietary interest in the marks and names of others. Reproduction in any manner whatsoever without express written permission from Dell Inc. is strictly forbidden.

